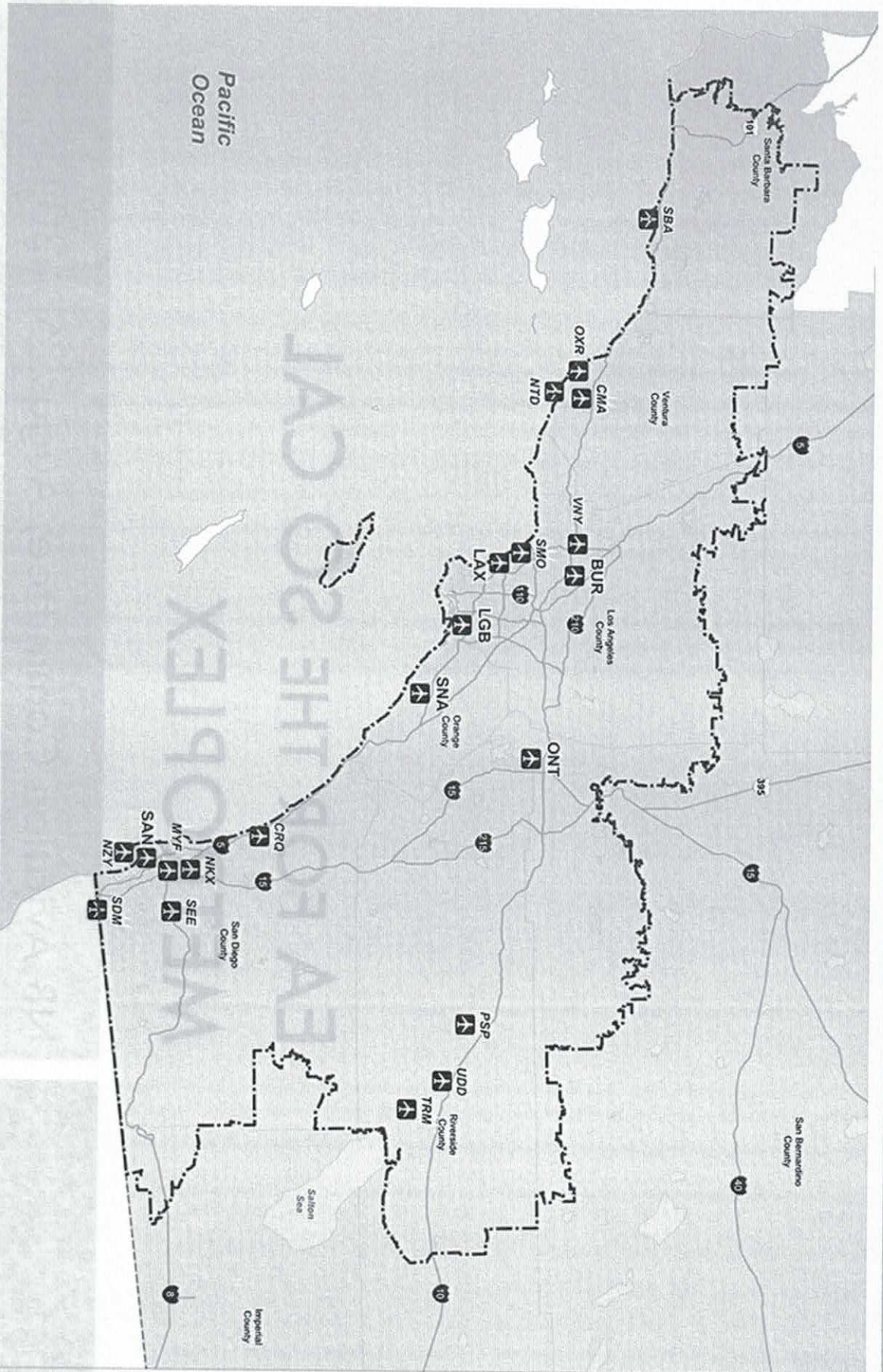


EA FOR THE SO CAL
METROPLEX

NB Aviation Committee, August 6th, 2015

So Cal Metropolis EA Study Area



What's this about?

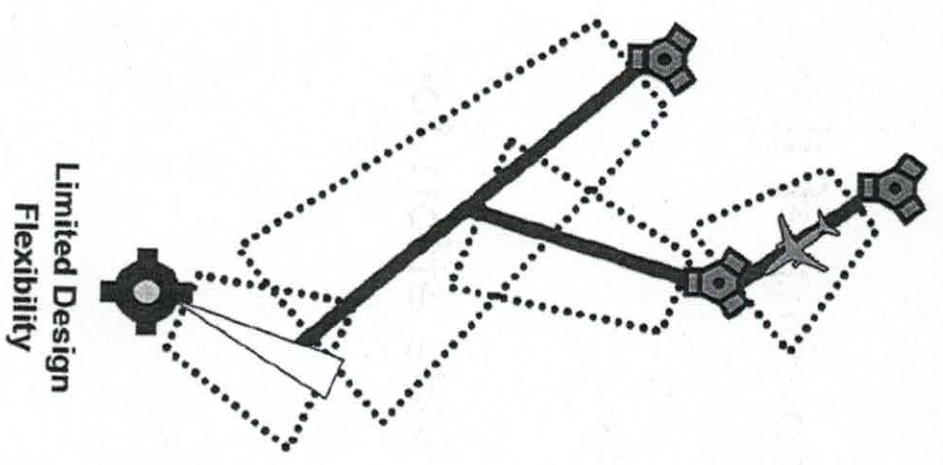
- “...Improve the efficiency of airspace at 21 airports.”
- “...may involve changes in ... flight paths and altitudes ... but would not result in ... ground disturbance or increase the # of (flights).”
- FAA's Goals:
 - Optimize flight paths and climb/descent
 - RNAV (more narrow, repeatable tracks) “everywhere” and
 - RNP (required navigation performance – most detailed) “where beneficial”

Terms to Know

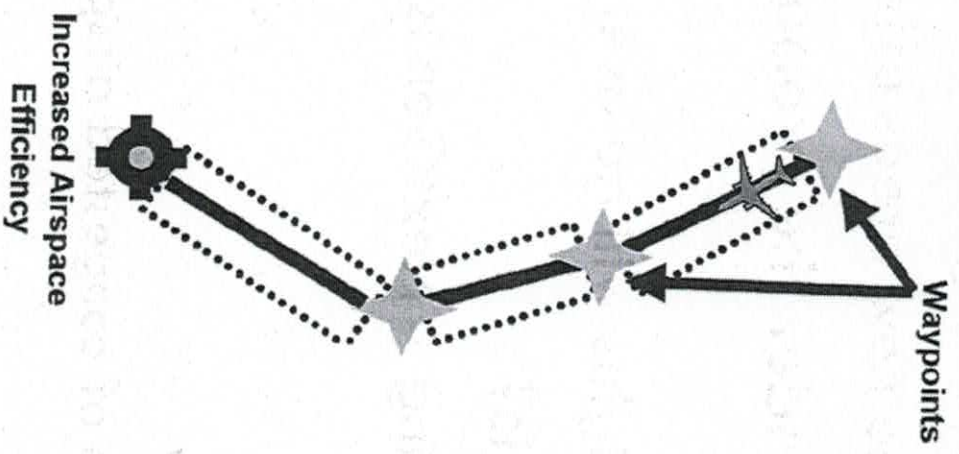
- ADS-B (automatic dependent surveillance - broadcast, a replacement for secondary radar).
- EA (Environmental Assessment following the rules of NEPA [the National Environmental Protection Act – state equivalent is CEQA])
- NextGen (next generation of flight technology)
- OAPM (optimization of airspace and performance in the metroplex)
- RNAV (area navigation)
- RNP (required navigational performance)
- SID (Standard Instrument Departure)
- STREL (both a point offshore and a departure path leading to that point)
- TOING (a point now near the Newport Dunes and NMS 7)

RNAV and RNP

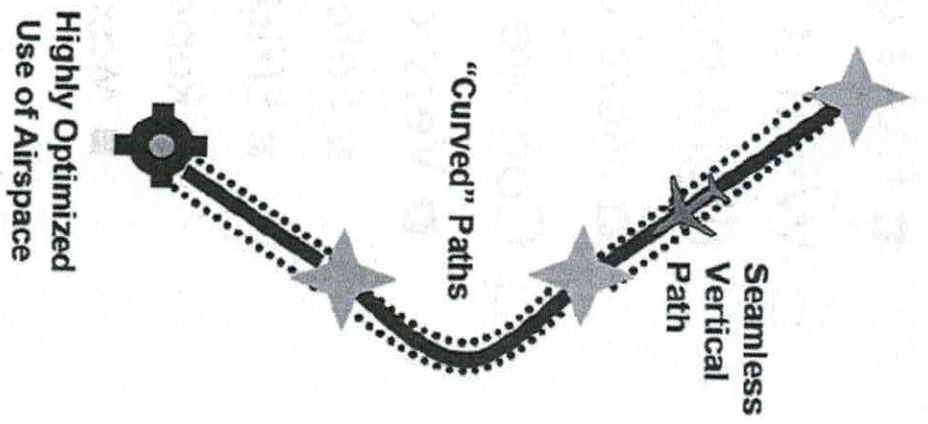
Current Ground NAVAIDS



RNAV



RNP



Questions We've Heard

- Are flight paths being moved over my home?
 - FAA's goal = no new areas affected.
- What if I live under the proposed narrowing of the flight paths?
 - More of the flights will go over your home.
- Can we stop this?
 - Very challenging – NextGen is a nationwide effort for:
 - Safety
 - Efficiency
 - Repeatability
 - Maximization of congested airspaces

Please know...

- Our ability to provide meaningful input is limited.
 - ▣ This is a Congressionally-driven process w/FAA
- The EA itself is not the most clear or helpful document.
- City will offer comments – primarily technical.
- You and your association should consider responding by September 8th, 2015.
 - ▣ Email to: 9-ANM-SoCalOAPM@faa.gov
 - ▣ Snail mail to:
 - SoCal Metroplex EA
 - Federal Aviation Administration
 - Western Service Center - Operations Support Group
 - 1601 Lind Avenue SW
 - Renton, WA 98057

Our Concerns

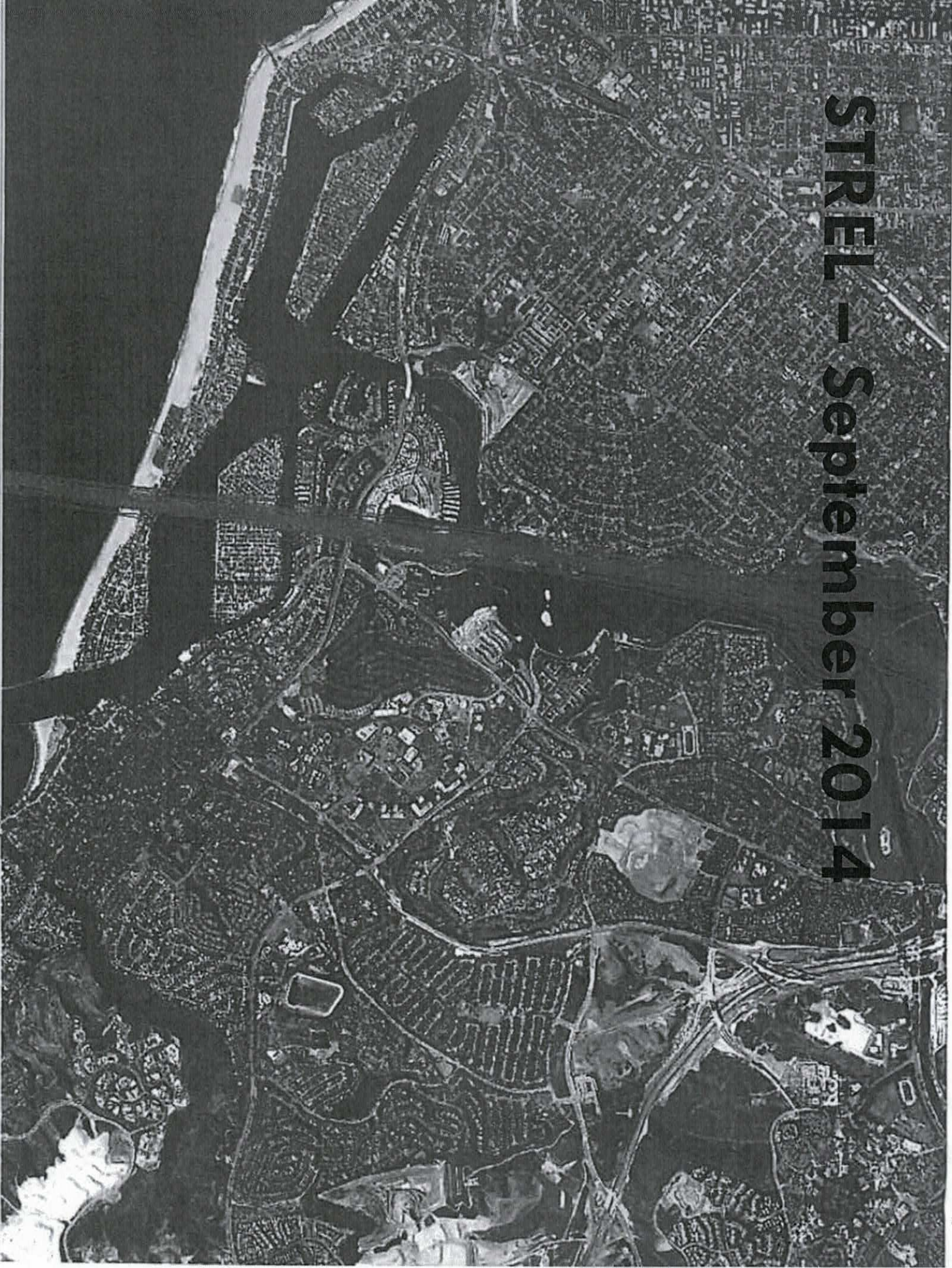
- The EA isn't robust – and shows limited detail so far (see maps)
- We want to be heard and to have our colleagues at JWA at the table.
- We're not sure ...
 - If the new STREL waypoint is fly-over or fly-by.
 - What the overall departure path to the STREL will be.
 - If a 2-turn path in the UNB will or should be considered.
- NextGen generally
 - Fewer neighborhoods affected, but
 - Those neighborhoods affected more intensely.
 - There is no formal city policy about narrowing or fanning – Policy A-17 is to minimize the impact of JWA operations on the quality of life of Newport Beach residents



MAP EXAMPLES

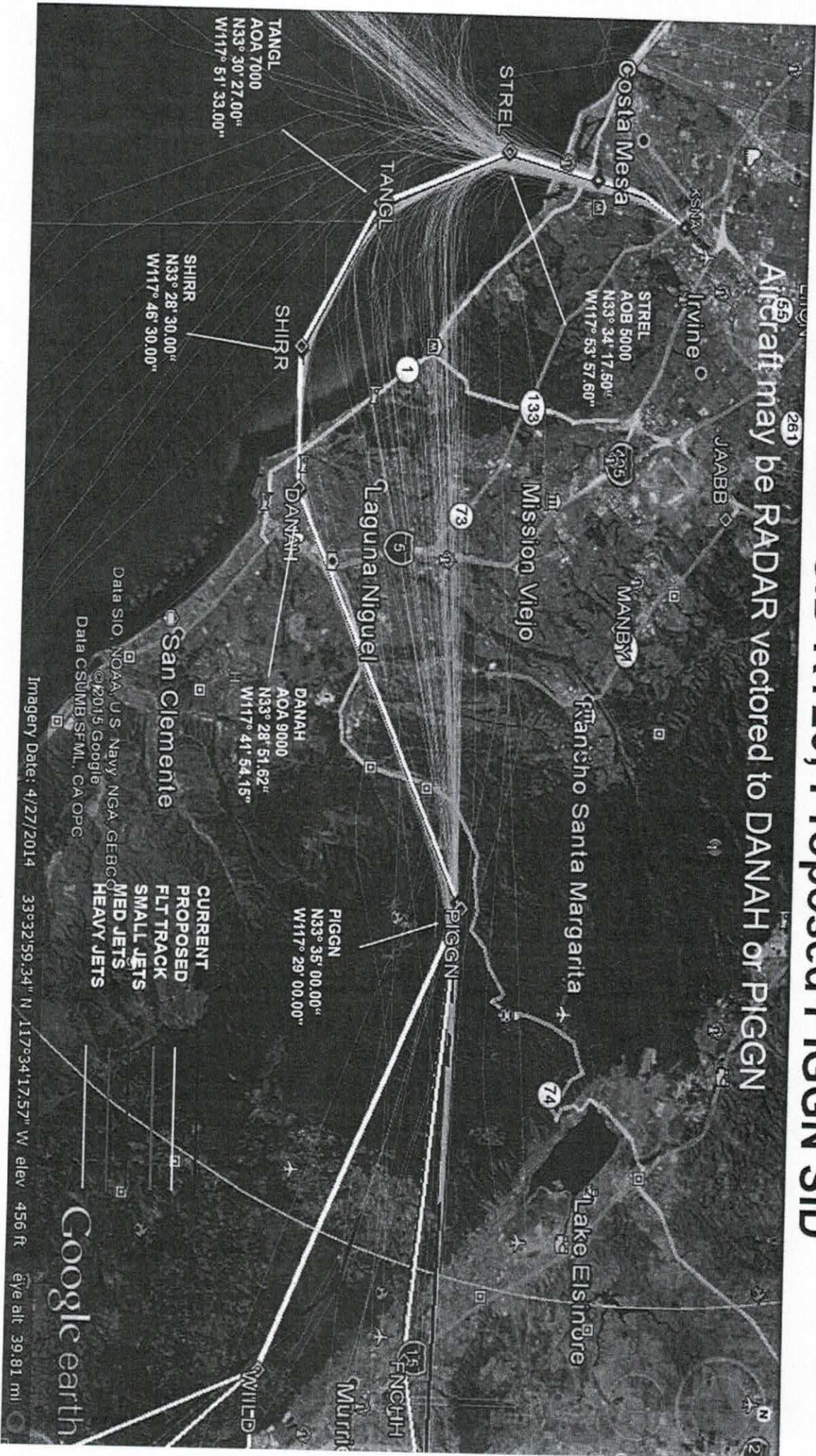
Next Gen, EA for Southern CA Metroplex

STREL – September 2014

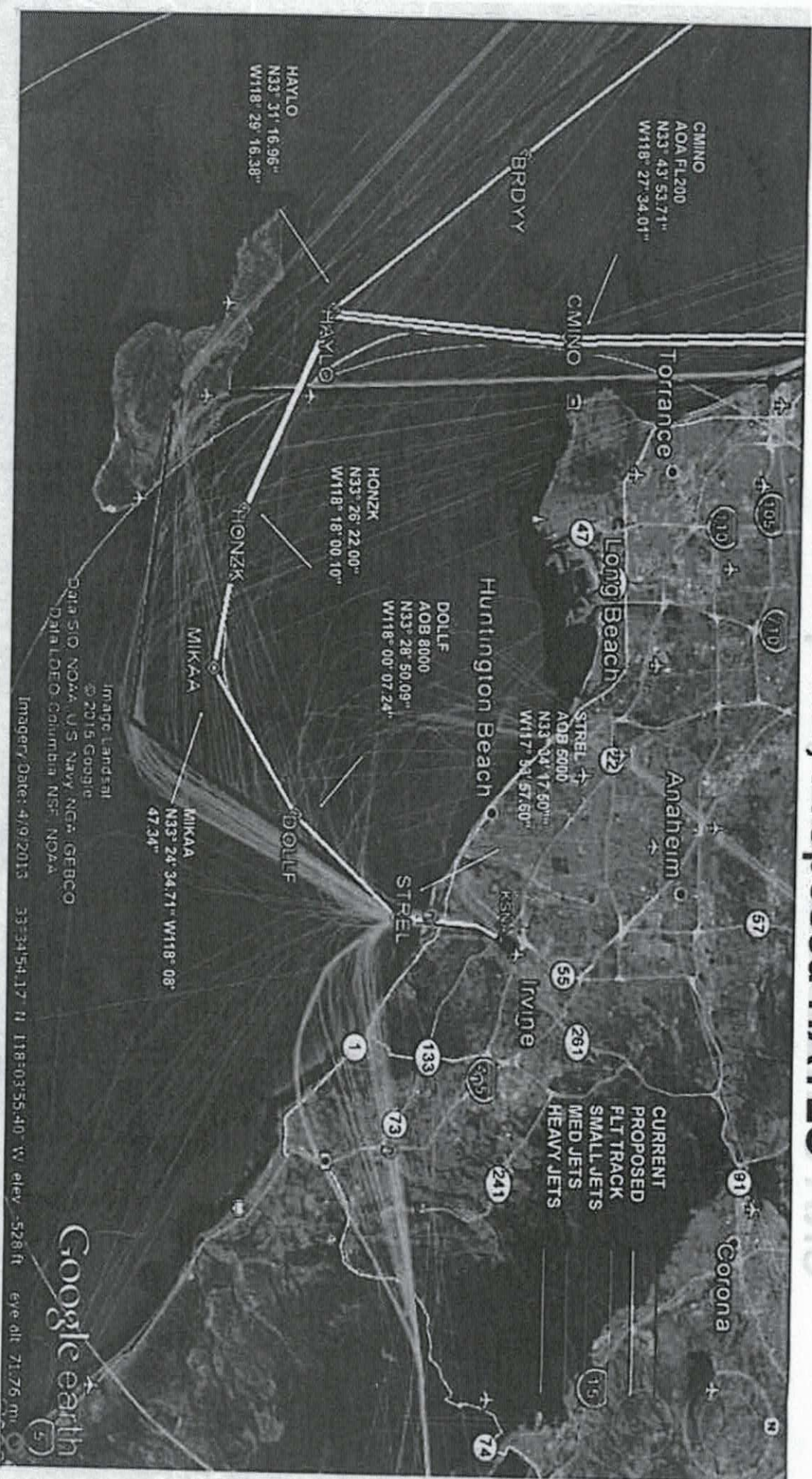


SNA STREL3 SID RY20; Proposed PIGGN SID

Aircraft may be RADAR vectored to DANAH or PIGGN

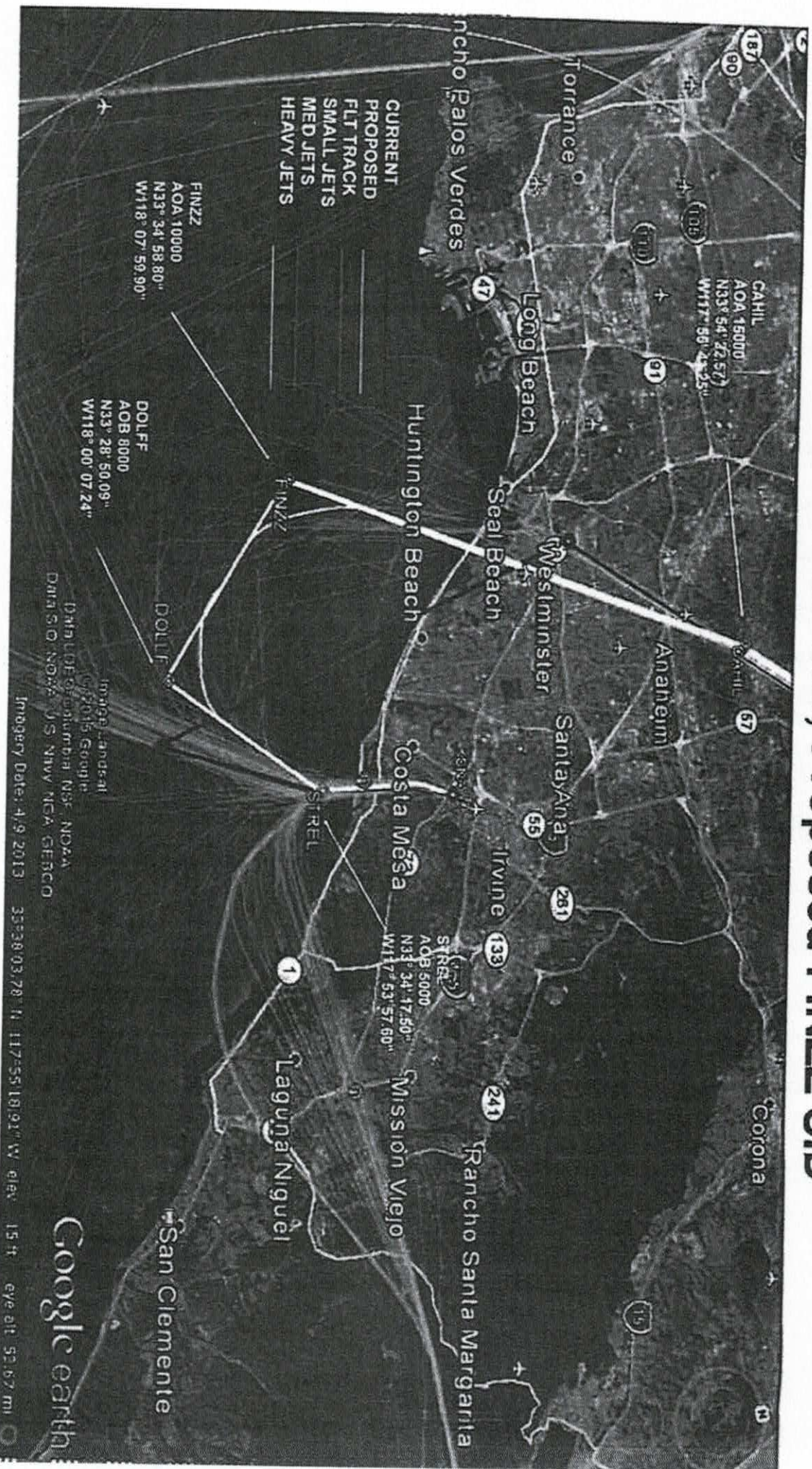


DIS 1 SNA CHANL2 SID; Proposed HAYLO AMS



Federal Aviation
Administration

SNA MUSEL7 SID; Proposed FINZZ SID

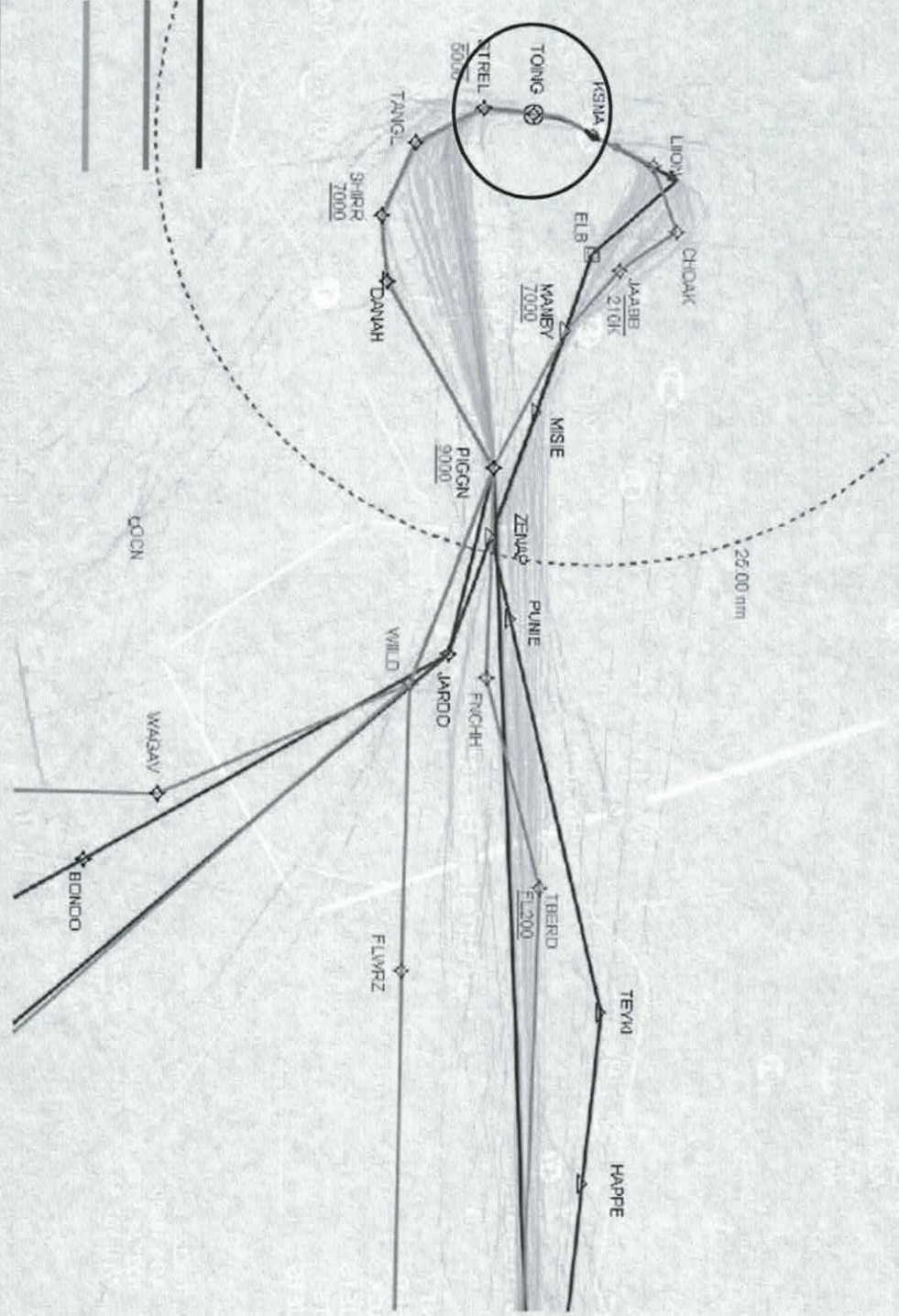


Federal Aviation Administration

SNA EL TORO/STREL SIDS (Old)

SNA PIGGN SID (New)

Close up view



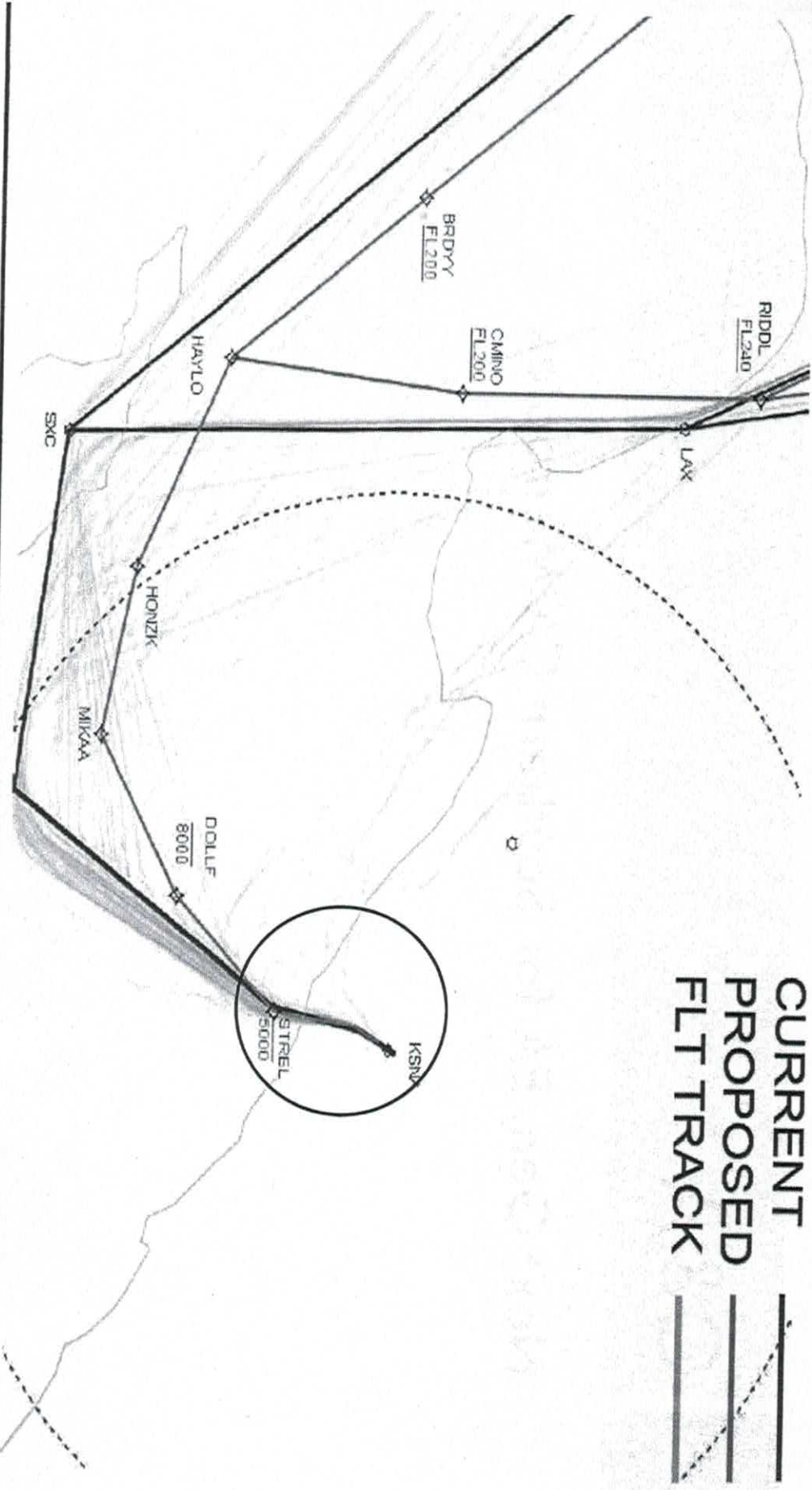
nothajva isubg-1
nohsetafimda



Federal Aviation
Administration

SNA CHANL SID (Old) SNA HAYLO SID (New)

Close up view



Federal Aviation
Administration

(bio) DIE JMANO ANS
(wen) DIE OLYAN ANS
welv qu esols

Q&A

Next Gen, EA for Southern CA Metroplex

